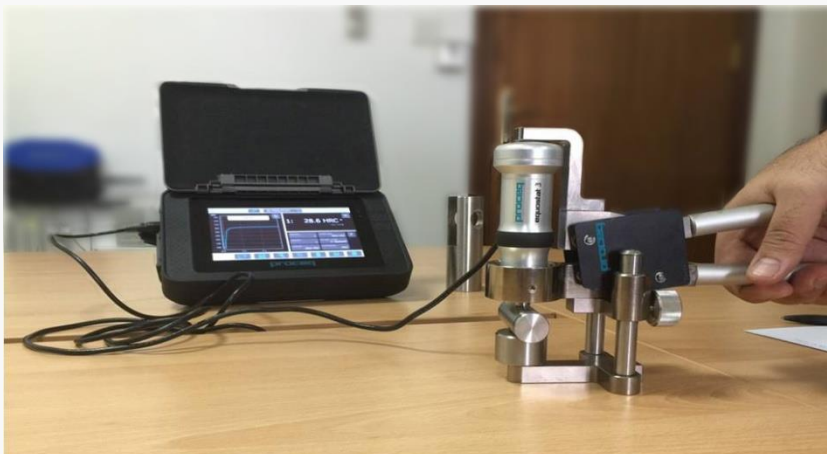


Equotip 550 Portable Rockwell

Accurate hardness testing of small components

The Equotip 550 Portable Rockwell is perfect for testing the hardness of small components, like small rods, wires or thin sheets, using the device's measuring clamp. All accessories are designed to flexibly address different test piece geometries and support the customer in achieving the most accurate results.



→ [Go to product website](#)

→ [Contact us](#)