

Profometer Corrosion

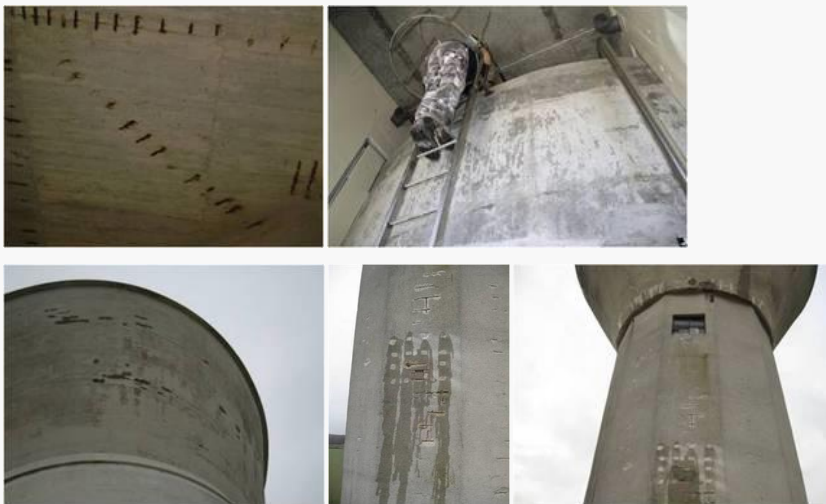
Measuring wear on concrete water towers

In France, the construction of concrete water towers was widespread in the middle of the twentieth century. The majority of these structures are still in use and defects related to wear-and-tear are now being encountered. These defects are mainly structural and related to water tightness.

Inspection and diagnosis with the Profometer Corrosion are both possible processes to make an appraisal of the structures. Corrosion analysis clearly forms the main basis of any recommendation for remedial work.

Exterior inspection application: Water tank, pillar

Internal inspection application: Water tank, slab, raft



→ [Go to product website](#)

→ [Contact us](#)