

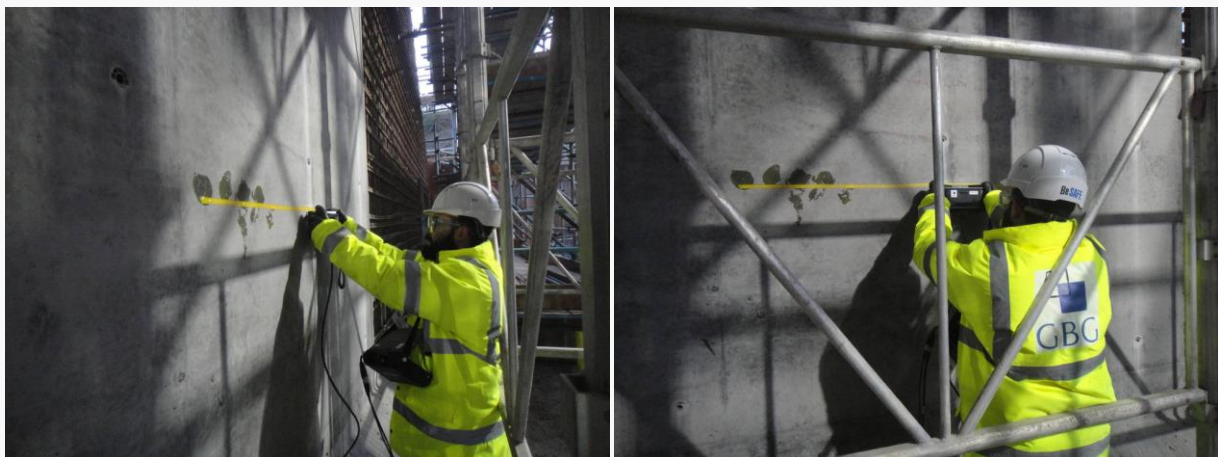
Pundit 200 Pulse Echo

Ultrasonic pulse echo testing ignores small bar reinforcement

The Pundit 200 Pulse Echo has proven useful on a number of projects for non-destructively identifying the full thickness depths of reinforced concrete slabs and walls. In many cases, the density of reinforcement hindered the effective use of radar and other acoustic techniques.

One particular benefit of using the Pundit 200 Pulse Echo is that it ignores small bar reinforcement. When this feature is used in conjunction with other techniques, a full picture of the construction arrangement and flaws or defects can be established.

Similarly, the product has also been applied successfully in accurately plotting the location of hidden 50 mm diameter service ducts within concrete slabs, and to establish the depth of plastered brick walls which are otherwise a 'noisy environment' for other techniques.



→ [Go to product website](#)

→ [Contact us](#)