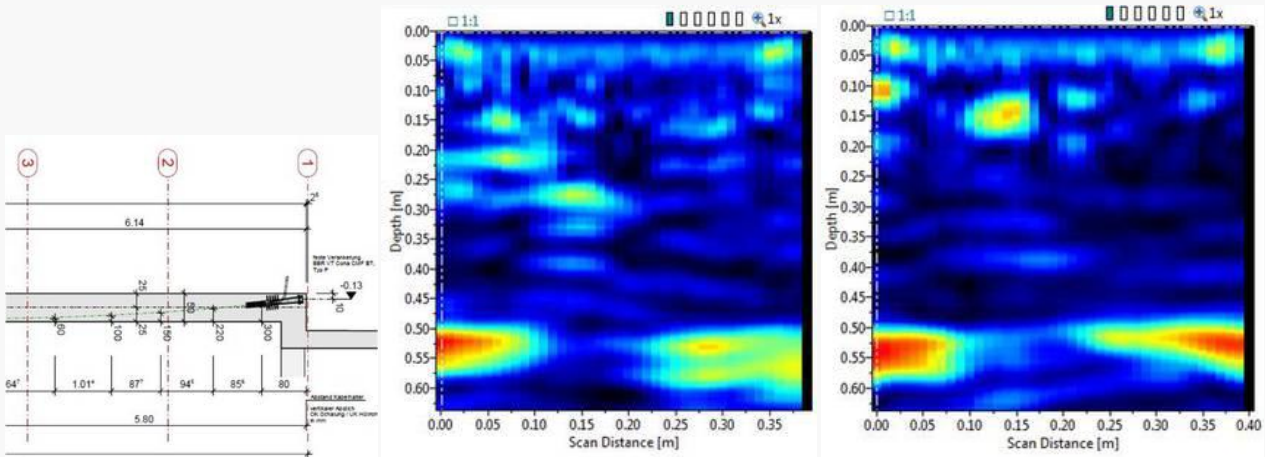


Pundit 200 Pulse Echo

## Quick and reliable ultrasonic locating of post-tensioning tendons

Locating post-tensioning tendons can be challenging. They are generally beyond the range of eddy current instruments and if there is too much reinforcing steel present, Ground Penetrating Radar (GPR) will also struggle to locate the tendons. Tomographic surveys with impact echo have been used for this application, but these are very time-consuming.

By using ultrasonic pulse echo B-scans with the Pundit 200 Pulse Echo it is very easy to follow the path of post-tensioning tendons. The scans shown here were carried out from below, perpendicular to the route of the tendon.



Typical PT tendon

PT tendon located at a depth of 25 cm

PT tendon located at a depth of 10 cm

- Go to product website
- Contact us