

Pundit 200 Pulse Echo

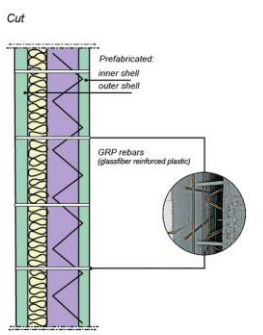
Ultrasonic spotting of voids and cracks between prefabricated walls

Pundit 200 Pulse Echo has been found useful on a number of projects that required non-intrusive inspection to identify the potential presence of voids in prefabricated concrete walls, where in-situ concrete had been poured in three layers.

Ultrasonic testing was found to provide a good quality check during completion of a building, as shown in the images here, when the homogeneity and the bonding of the in-situ concrete had to be checked as requested by the main building contractor. This type of wall is frequently used for commercial or industrial buildings in Germany and Austria, especially when the developer wishes to have some graphics or text on the exposed concrete.



Insight in a prefabricated wall



Structure



Transportation



House construction

→ Go to product website

→ Contact us